

## Native app for Smart Phones & Tablets

# IQ

---

MSD-501/MSD-502/MSD-701/MSD-702  
MSD-5401/MSD-5402/MSD-5403/MSD-5404  
MSD-5401SL/MSD-5402SL  
MSD-6203/MSD-6204/MSD-6206/MSD-6208  
MSD-701AMP  
MSD-701UHD/MSD-702UHD/MSD-801UHD/MSD-802UHD  
MSD-S51/MSD-S52/MSD-S71/MSD-S72

<User Guide>

Ver.1.0.0



## **Trademarks**

- Microsoft® .NET is software connecting you, information, system and device.
- The program in this document is based on Microsoft .NET Framework.
- iPhone, iPad, and App Store are trademarks of Apple Inc. in the United States or other countries.
- iOS is OS name of Apple Inc. and either registered trademark or trademark of Cisco Systems, Inc. or other companies in the United States or other countries.
- Android and Google Play are the trademarks of Google LLC.
- All other company and product names mentioned in this manual are either registered trademarks or trademarks of their respective owners. In this manual, the “®” or “™” marks may not be specified.

# Before reading this manual

- All rights reserved.
- Some information contained in this User guide such as exact product appearance, graphical user interfaces, menu operations, and so on may differ depending on the product version.
- This User guide is subject to change without notice.

## Copyright

IDK Corporation owns all copyright of this control program. You do not have permission to convert, transfer, sell, or redistribute this program for any reason.

## Warranty

This software is free of charge. However, IDK does not warrant this software. We also do not upgrade the software or respond to any inquiries regarding it, and we may stop providing this control program. We are not responsible for any problems occurring while in use of this software.

## Table of Contents

1	About IQ.....	5
1.1	System requirements.....	5
2	Setup.....	6
2.1	Before installing IQ.....	6
2.2	Installing and uninstalling.....	6
2.3	Starting.....	6
3	Setting menu.....	7
3.1	Displaying menu.....	7
3.2	Menu.....	8
3.2.1	[Basic] menu.....	9
3.2.2	[Advanced] menu.....	9
4	Operation.....	10
4.1	[Device Manager].....	10
4.1.1	[Recently Used].....	11
4.1.2	[Manual Connection].....	12
4.1.3	[Demo Mode].....	13
4.2	[Outputs].....	14
4.3	[AudioInput].....	17
4.4	[Preset].....	18
4.5	[Cross-PointMemory].....	19
4.6	[Test Patterns].....	20
4.7	[Registered Commands].....	21
4.8	[Display Settings].....	22
4.8.1	[Video Freeze].....	23
4.8.2	[Bitmap].....	24
4.9	[HDCP Settings].....	25
4.10	[Resolution Setting].....	26
4.11	[Settings].....	27
4.11.1	Changing device name.....	28
4.11.2	Changing input icon and name.....	30
4.11.3	Changing output icon and name.....	32
4.12	[Version].....	34
5	Terminating IQ.....	35

# 1 About IQ

---

IDK's IQ is a native app for Smart Phones & Tablets, enabling intuitive control of IDK products. It is an excellent choice for conference rooms, classrooms, meeting spaces and beyond.

## 1.1 System requirements

---

Item	Requirement
OS	iOS Ver. 9.0 or later, Android Ver. 5.0 or later
Device	iPhone, iPad, Android smartphone

## 2 Setup

---

### 2.1 Before installing IQ

---

1. Connect the MSD, Wi-Fi router, and sink devices.
2. Power on them.
3. Set the LAN communication for the MSD.

### 2.2 Installing and uninstalling

---

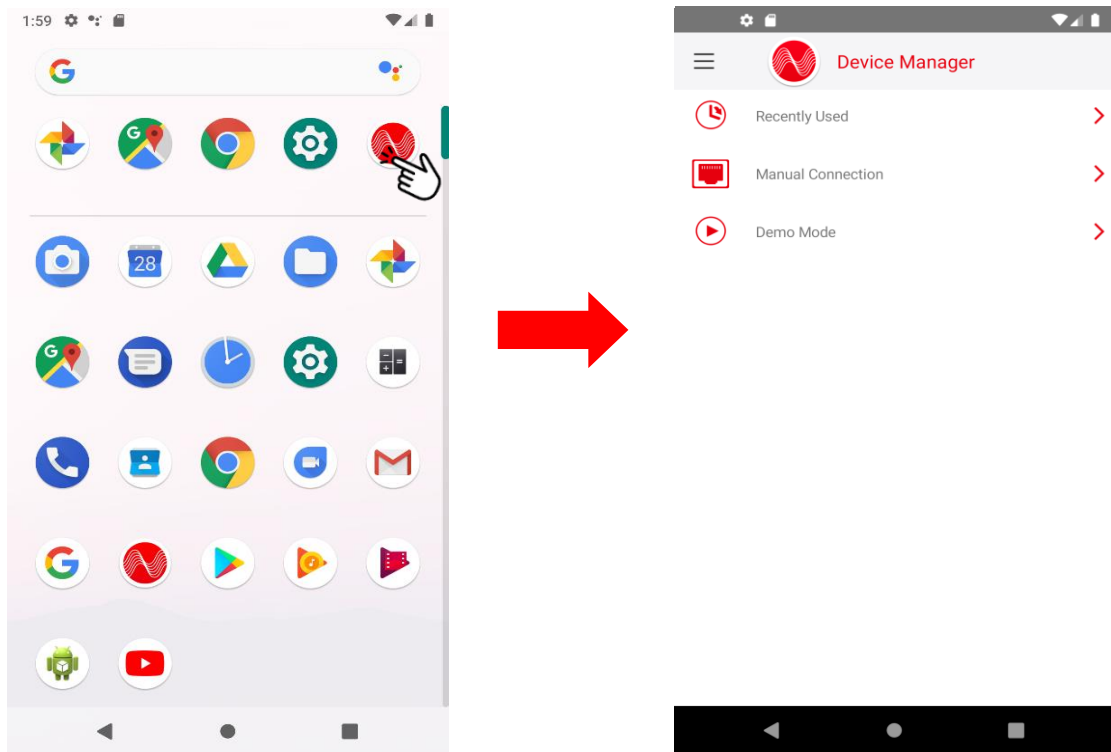
Install the IQ from App Store or Google Play.

To uninstall the application follow the uninstallation procedure of your device.

### 2.3 Starting

---

Tap the IQ icon to start the IQ and display connection setting page.



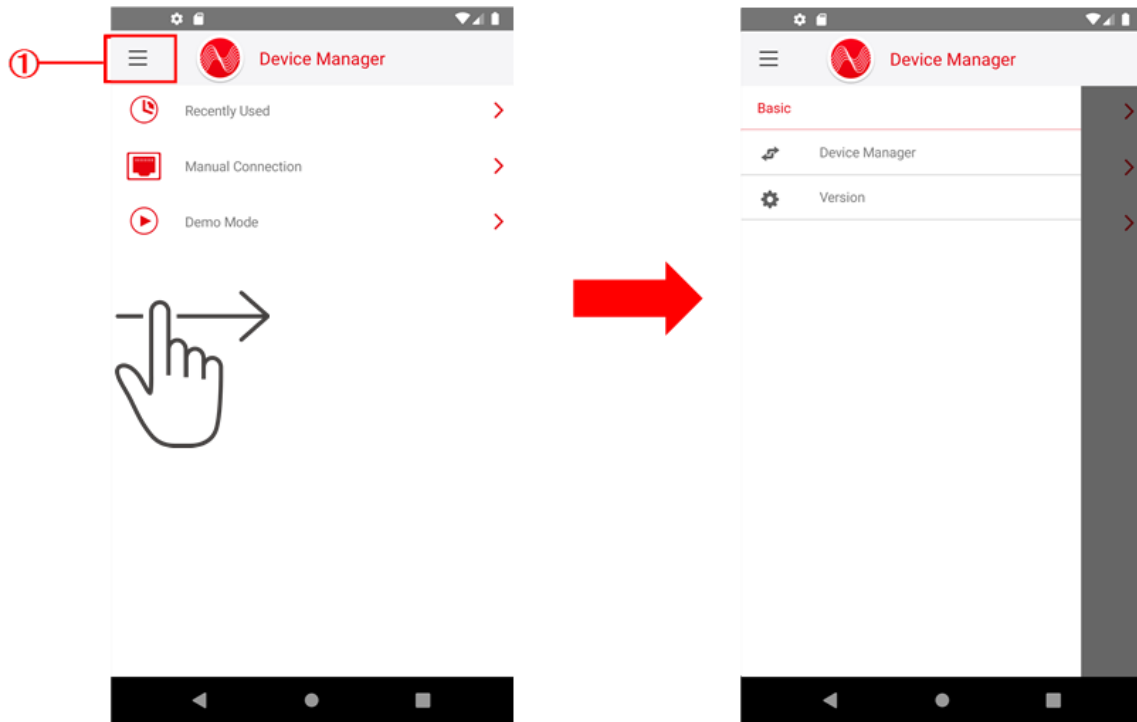
## 3 Setting menu

---

### 3.1 Displaying menu

---

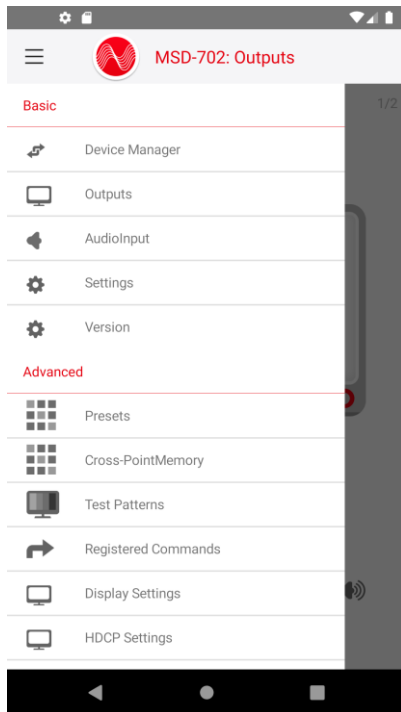
Tap the menu icon (①) or swipe right



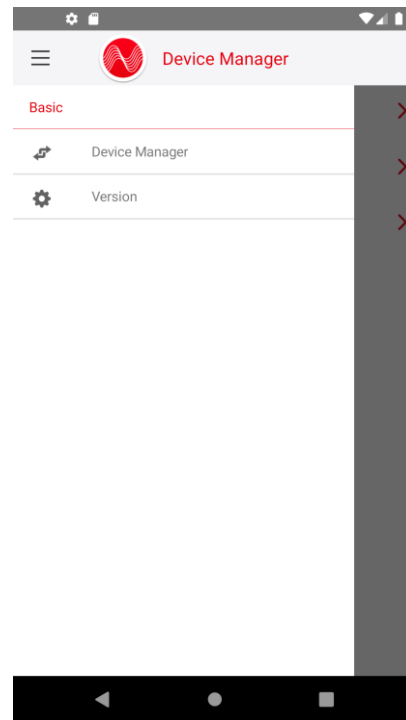
## 3.2 Menu

The menu is composed of [Basic] menu and [Advanced] menu.

Only [Device Manager] and [Version] of [Basic] menu are displayed when no device is connected.



[Fig. 3.1] MSD is connected



[Fig. 3.2] No MSD is connected



### 3.2.1 [Basic] menu

---

[Device Manager]	Selects connection mode	P.10
[Outputs]	Selects input channel and audio	P.14
[AudioInput]	Sets input audio volume	P.17
[Settings]	Sets other settings	P.27
[Version]	Shows the IQ version	P.34

### 3.2.2 [Advanced] menu

---

[Presets]	Loads saved settings	P.18
[Cross-PointMemory]	Loads saved crosspoint	P.19
[Test Patterns]	Selects test pattern	P.20
[Registered Commands]	Executes registered command	P.21
[Display Settings]	Sets video freeze and bitmap	P.22
[HDCP Settings]	Sets HDCP of input/output	P.25
[Resolution Setting]	Sets resolution of input/output	P.26

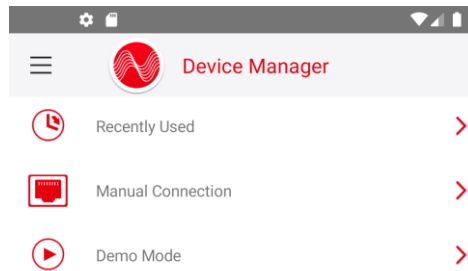
## 4 Operation

---

### 4.1 [Device Manager]

---

Select a connection mode from [Recently Used], [Manual Connection], or [Demo Mode].



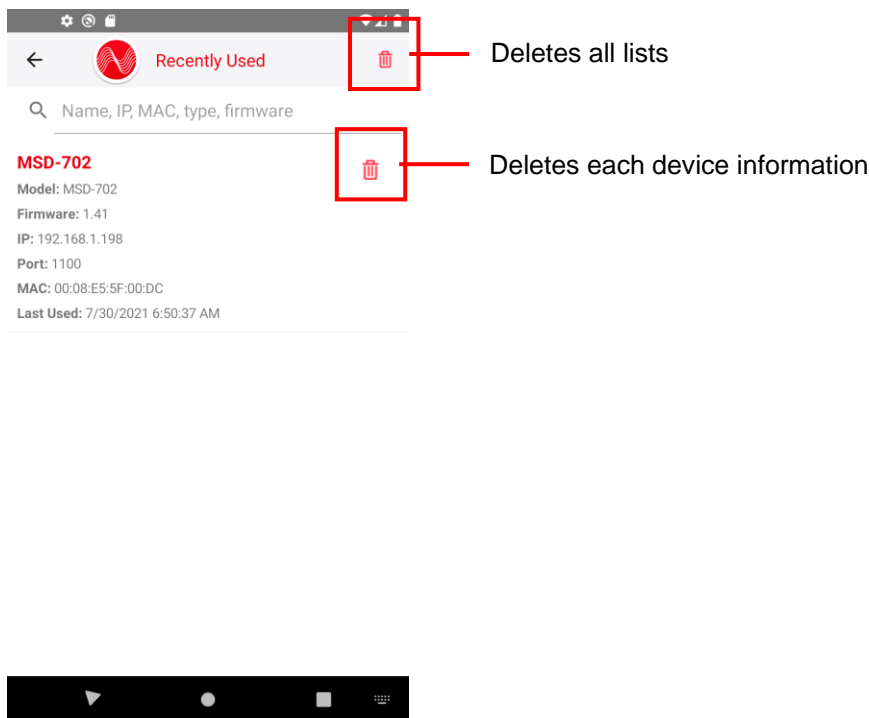
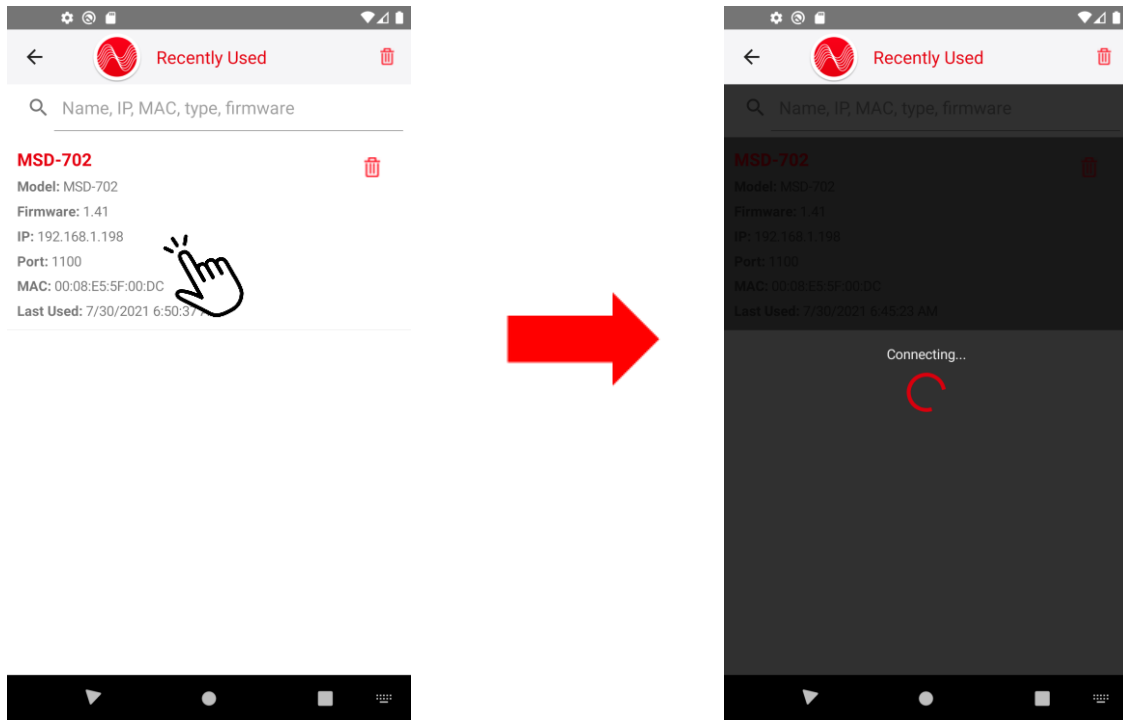
[Recently Used]	Selects from devices that have been connected	P.11
[Manual Connection]	Specifies IP address and port number	P.12
[Demo Mode]	Checks application without using device	P.13

### 4.1.1 [Recently Used]

[Recently Used] lists devices that have been connected in the past.

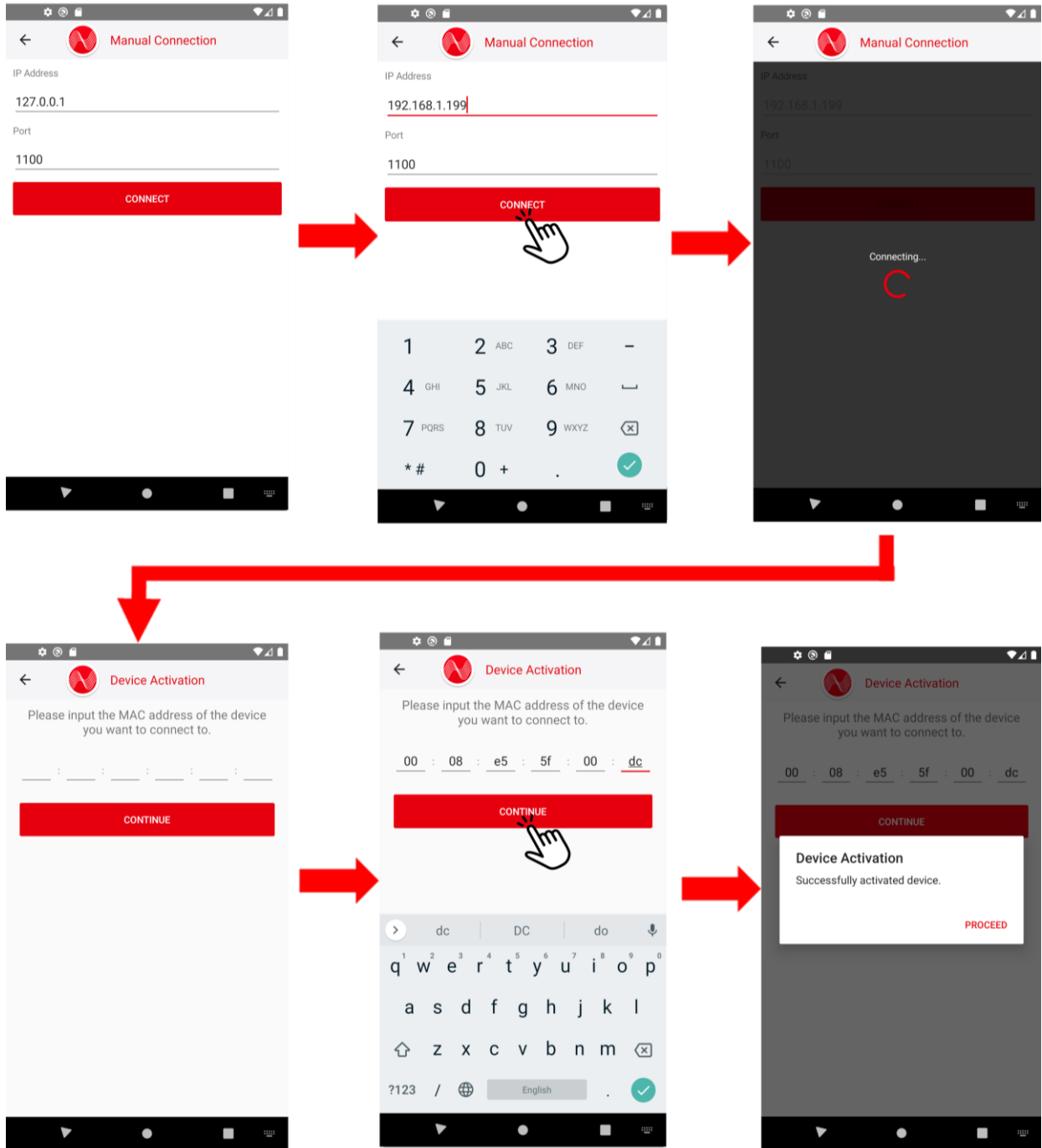
To connect : Tap the desired device.

To delete : Tap the trash icon.



## 4.1.2 [Manual Connection]

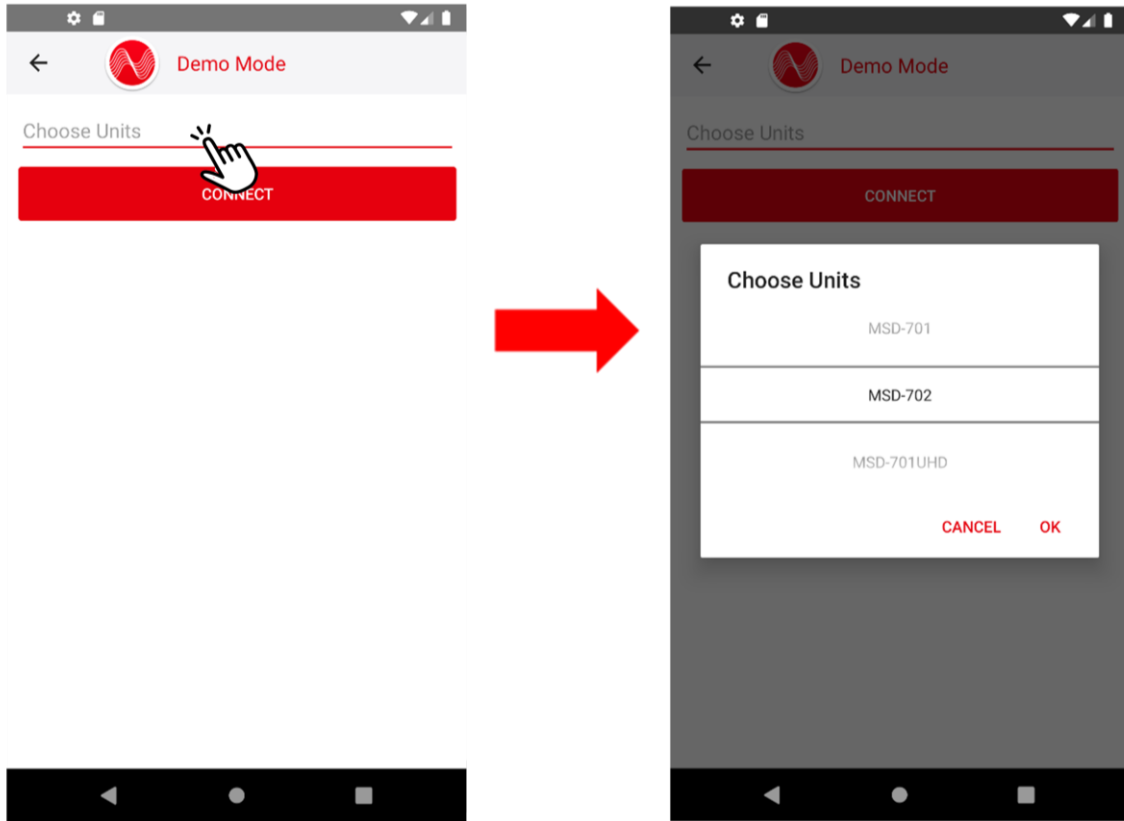
1. Enter [IP Address] and [Port] number and tap [CONNECT].
2. Enter [MAC address] and tap [CONTINUE]. (This step is skipped for activated device.)
3. When the device is activated, it is added to the [Recently Used] list.



### 4.1.3 [Demo Mode]

---

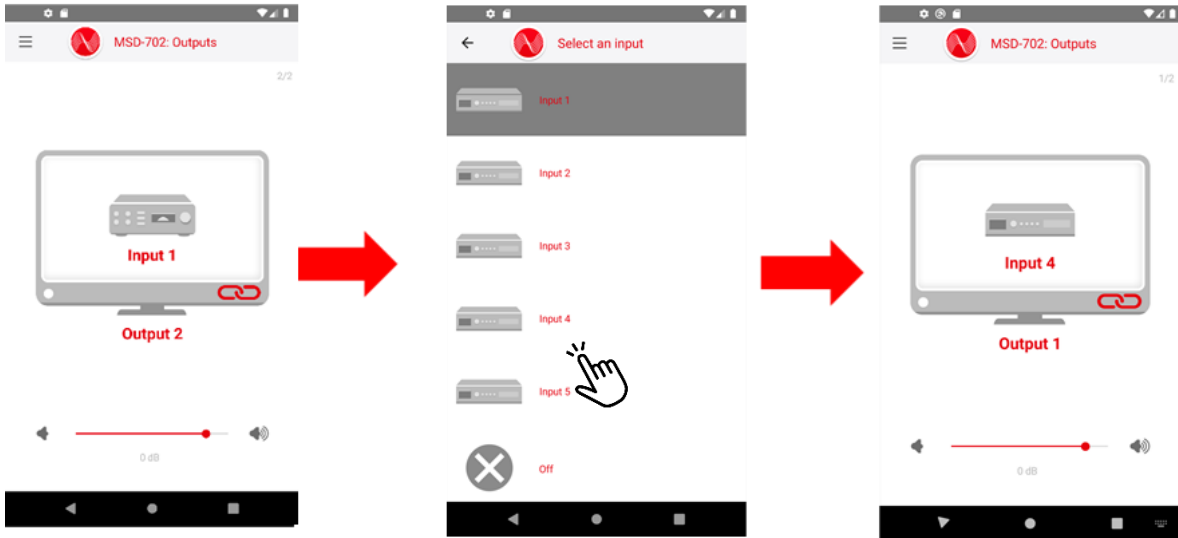
1. Tap [Choose Units].
2. Select the desired device.
3. Tap [CONNECT].



## 4.2 [Outputs]

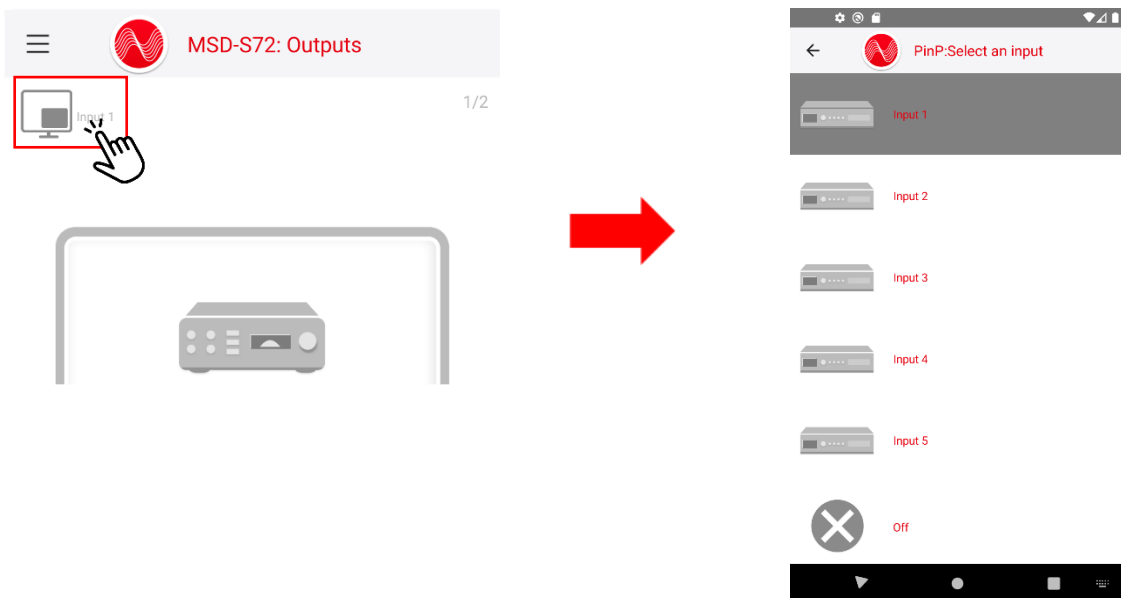
### To switch output video:

Tap the desired [Input x] (x: the number of inputs) from [Select an input].



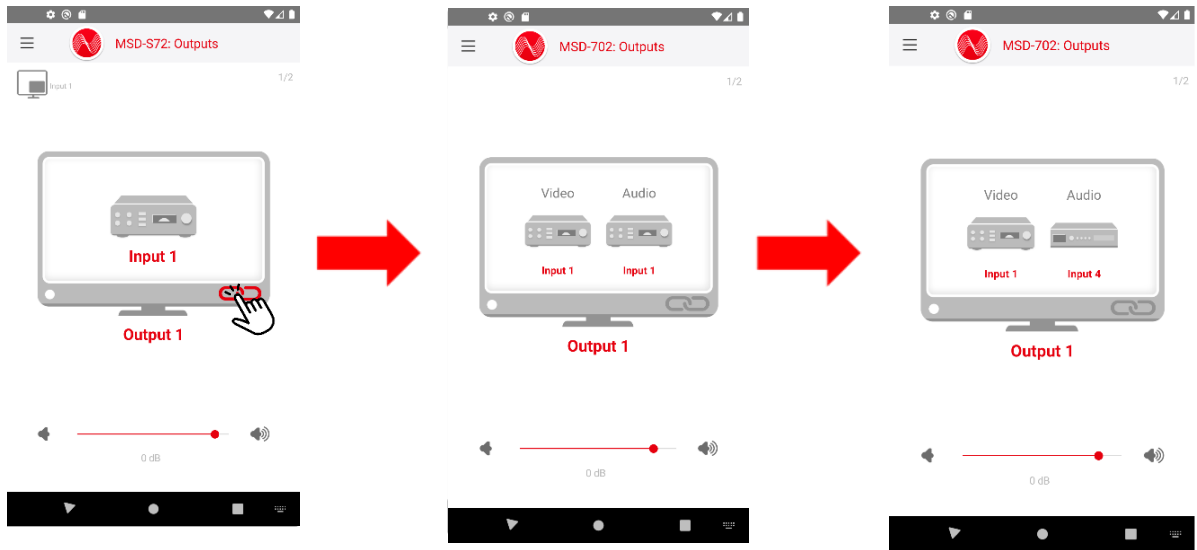
For models having PinP feature, input signal of PinP output can be selected.

1. Tap the monitor icon.
2. Tap the desired [Input x] (x: the number of inputs) from [Select an input].



**To switch Video/Audio:**

Tap the button shown below.



**To adjust output audio:**

Turning up : Drag the slider right.

Turning down : Drag the slider left.

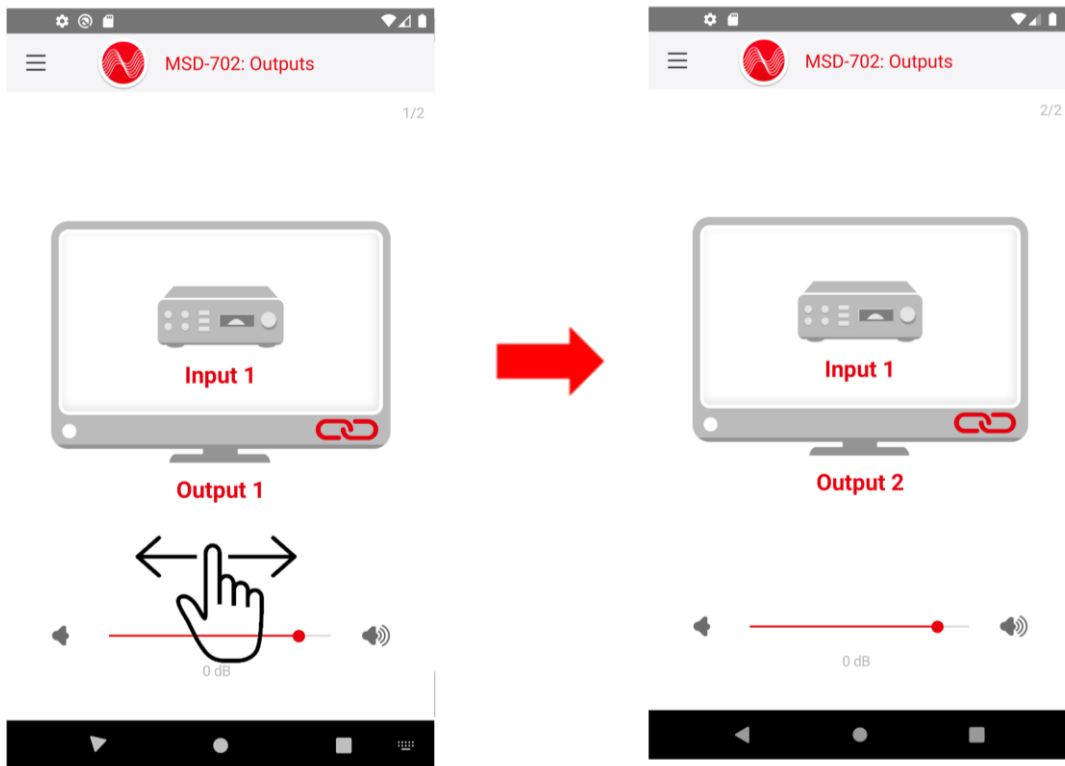


Muting: Tap the icon shown below.



**To switch output to be set:**

Swipe the [Outputs] page.



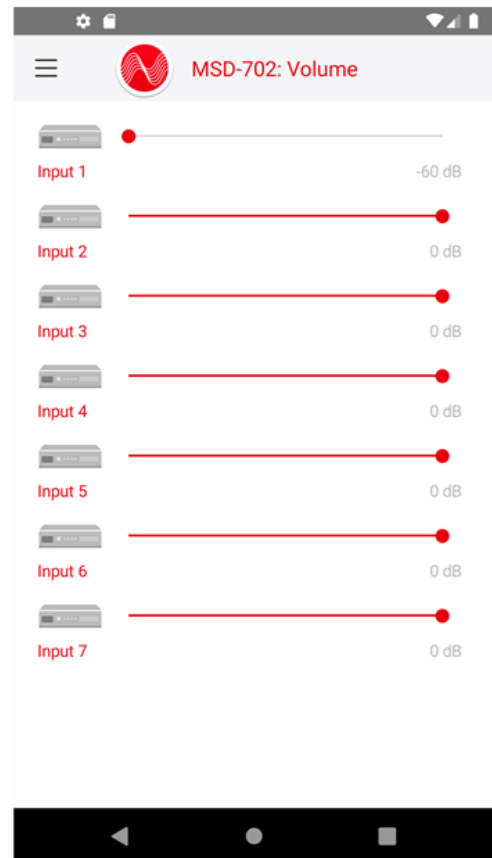
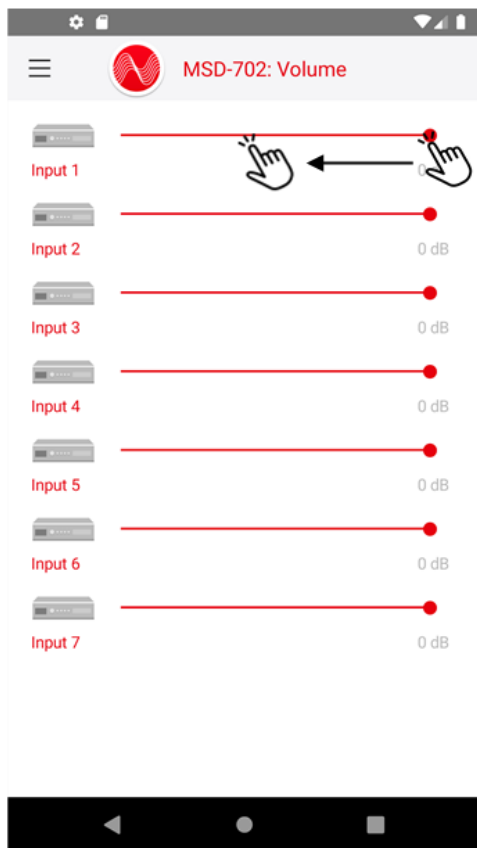


## 4.3 [AudioInput]

### To adjust input audio:

Turning up : Drag the slider right.

Turning down : Drag the slider left.

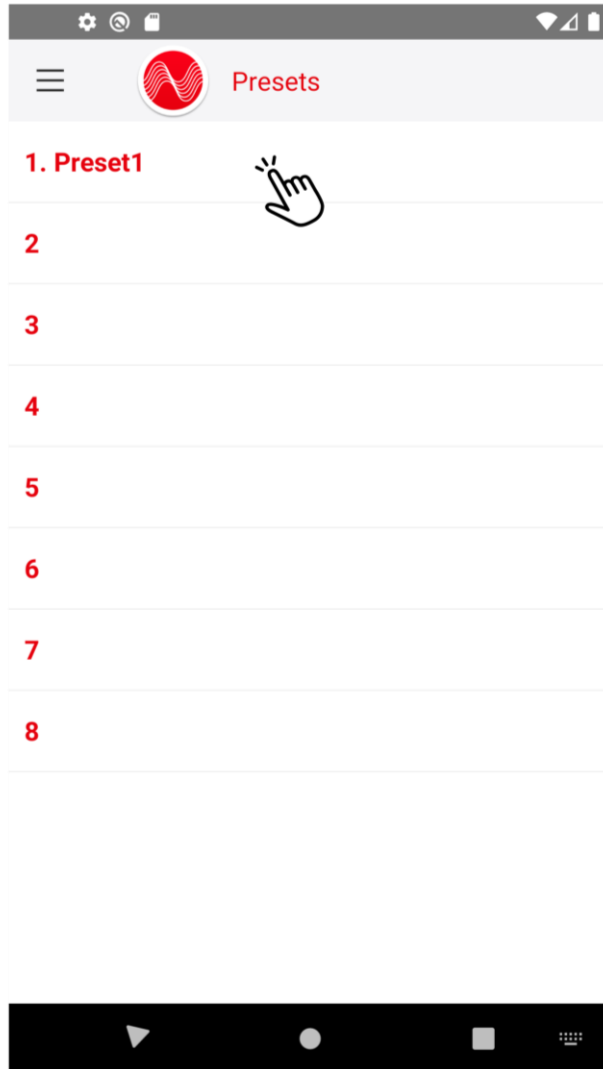


## 4.4 [Preset]

---

To load settings in the preset memory:

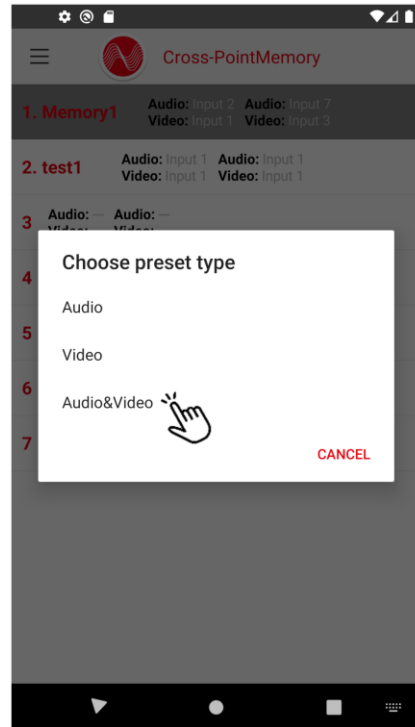
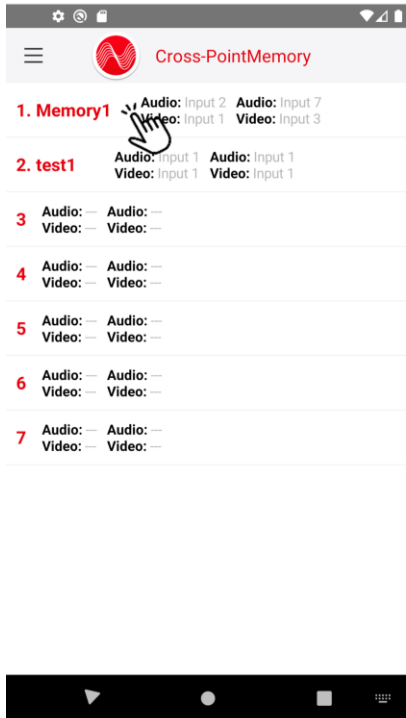
Tap the desired preset number.



## 4.5 [Cross-PointMemory]

To load crosspoint [Video]/[Audio]/[Audio&Video]:

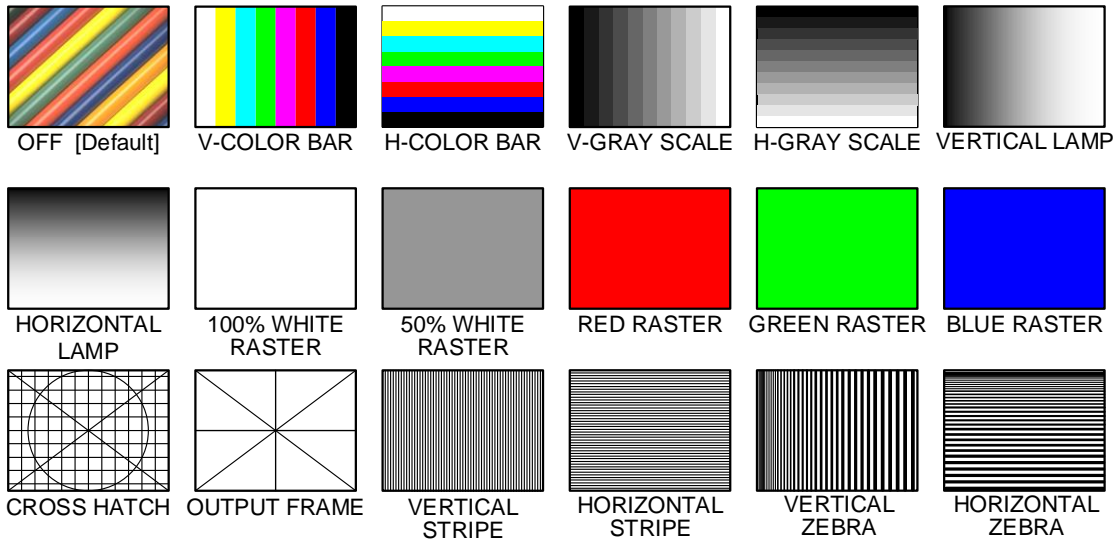
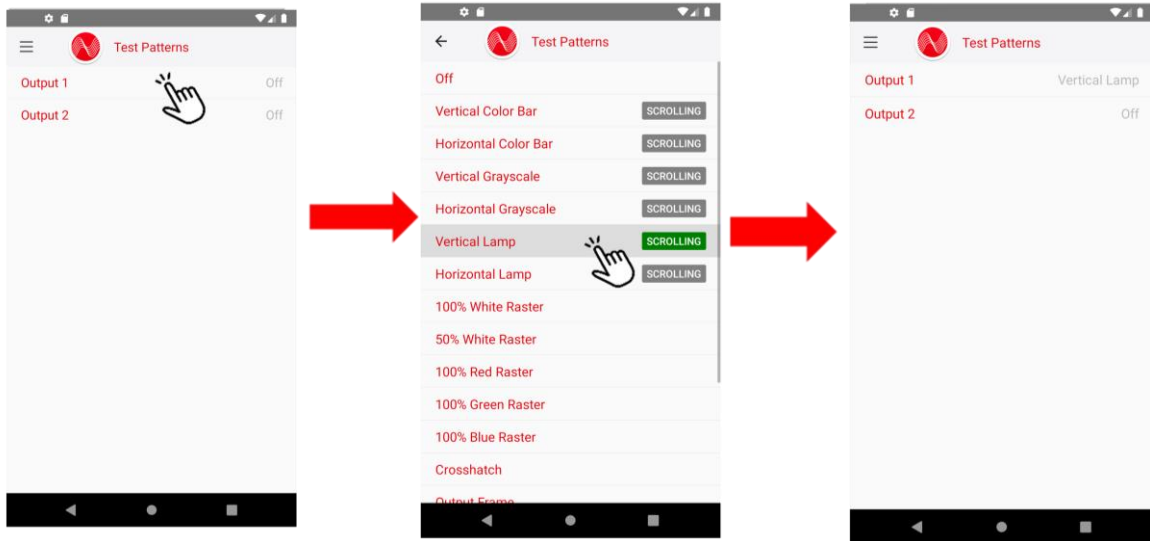
1. Tap the desired memory.
2. Select [Audio], [Video], or [Audio&Video].



## 4.6 [Test Patterns]

To select a test pattern:

1. Tap the desired output number and test pattern.
2. If you want to set scrolling, tap the [SCROLLING] button and select [ON] (Green) or [OFF] (Gray).

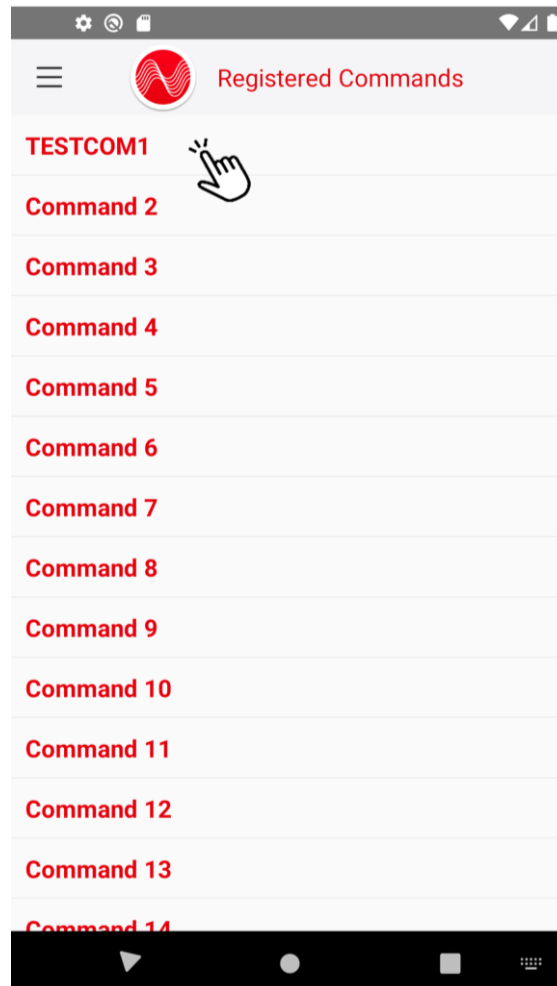


## 4.7 [Registered Commands]

---

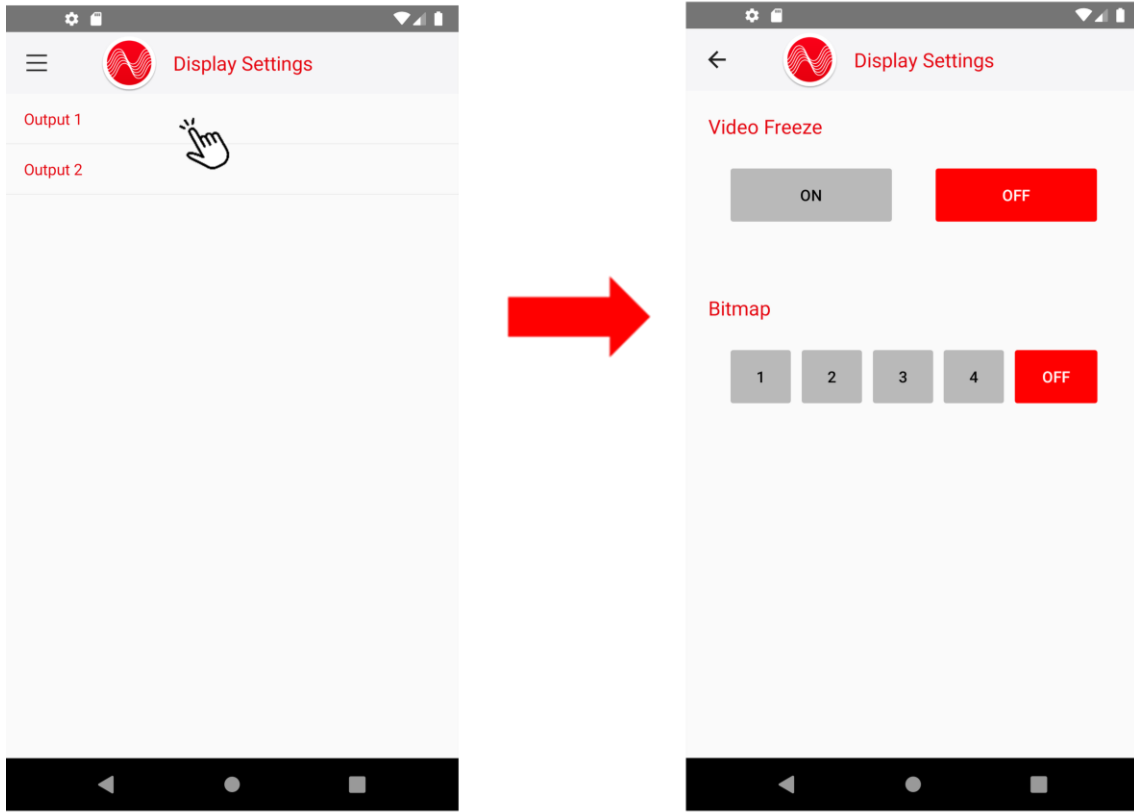
To execute a control command that is saved in the device.

Tap the desired command.



## 4.8 [Display Settings]

---

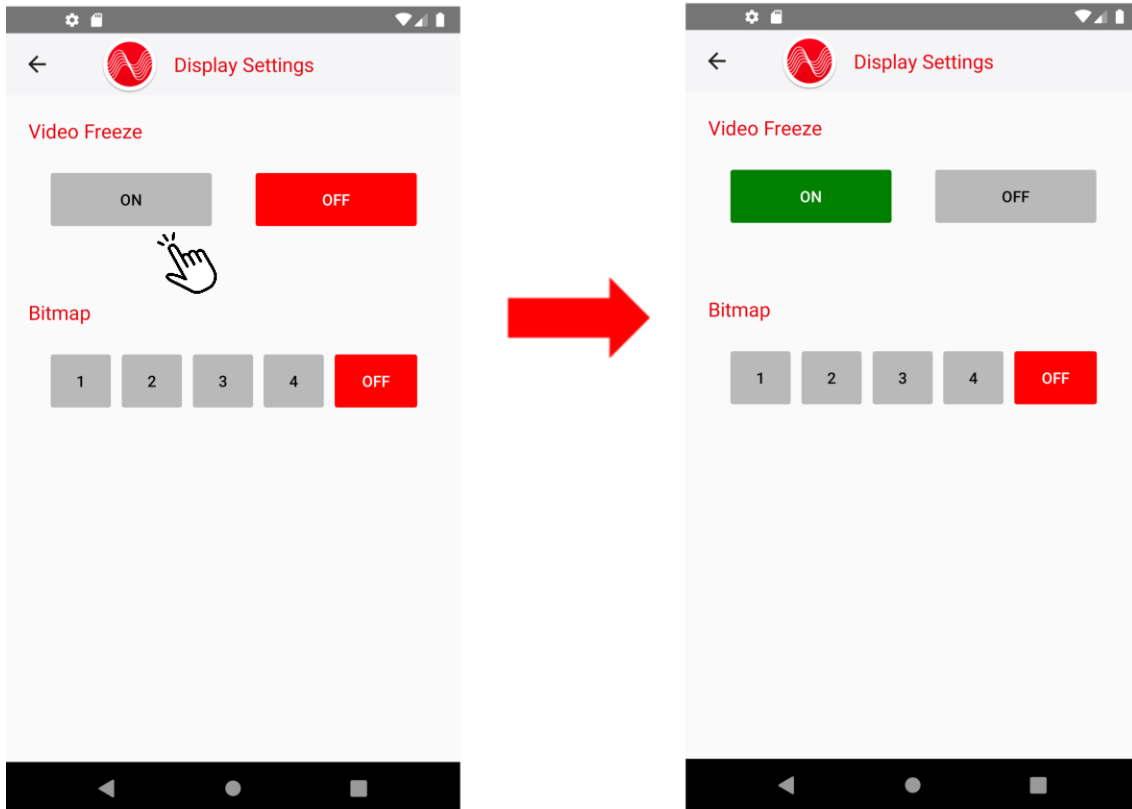


## 4.8.1 [Video Freeze]

**To enable/disable video freeze and set bitmap:**

Select the desired output and select [ON] or [OFF].

When input channel is switched, freeze is canceled.



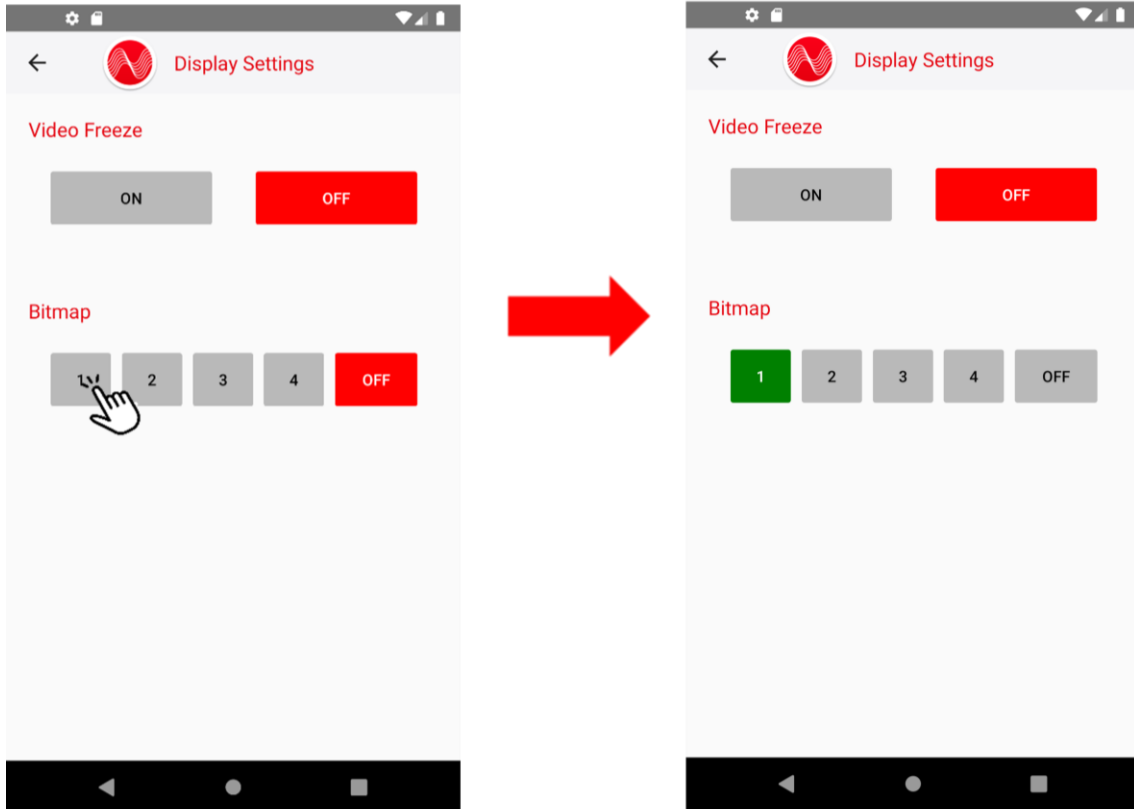
## 4.8.2 [Bitmap]

---

### To enable/disable bitmap output:

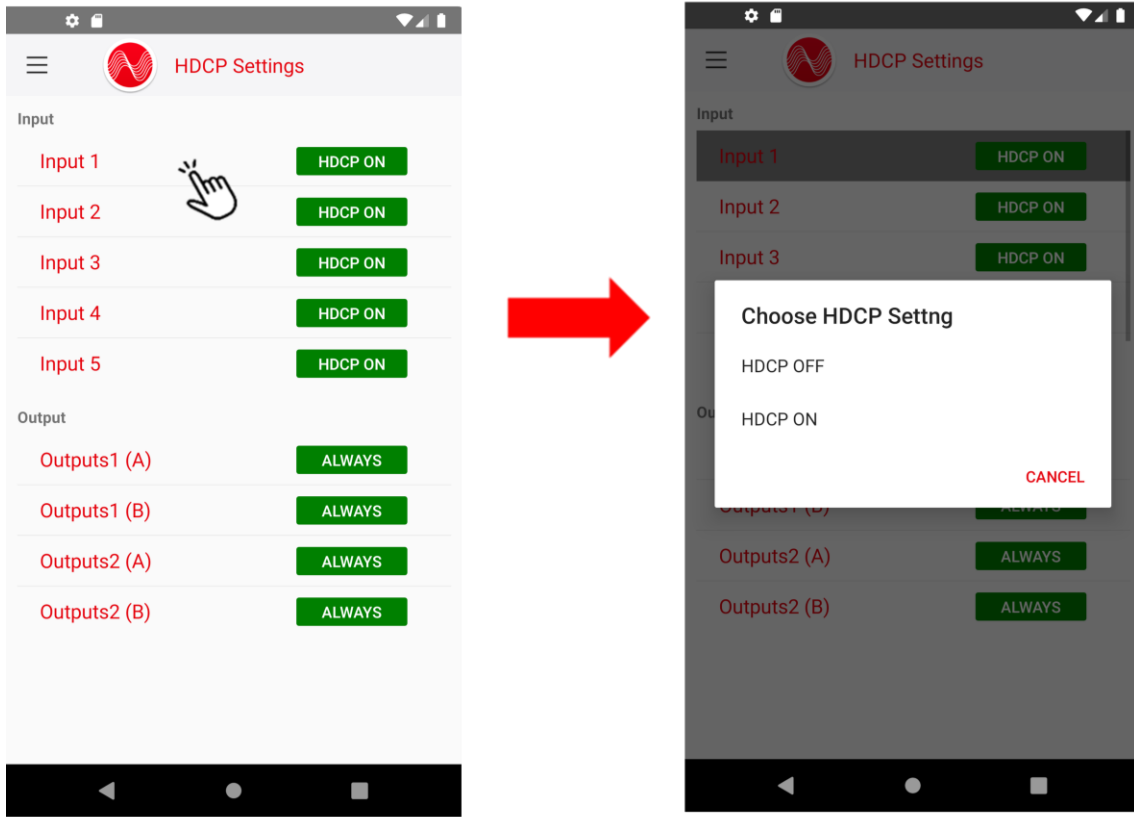
Select the desired output and select the bitmap number or [OFF].

Overlay bitmap cannot be set here.





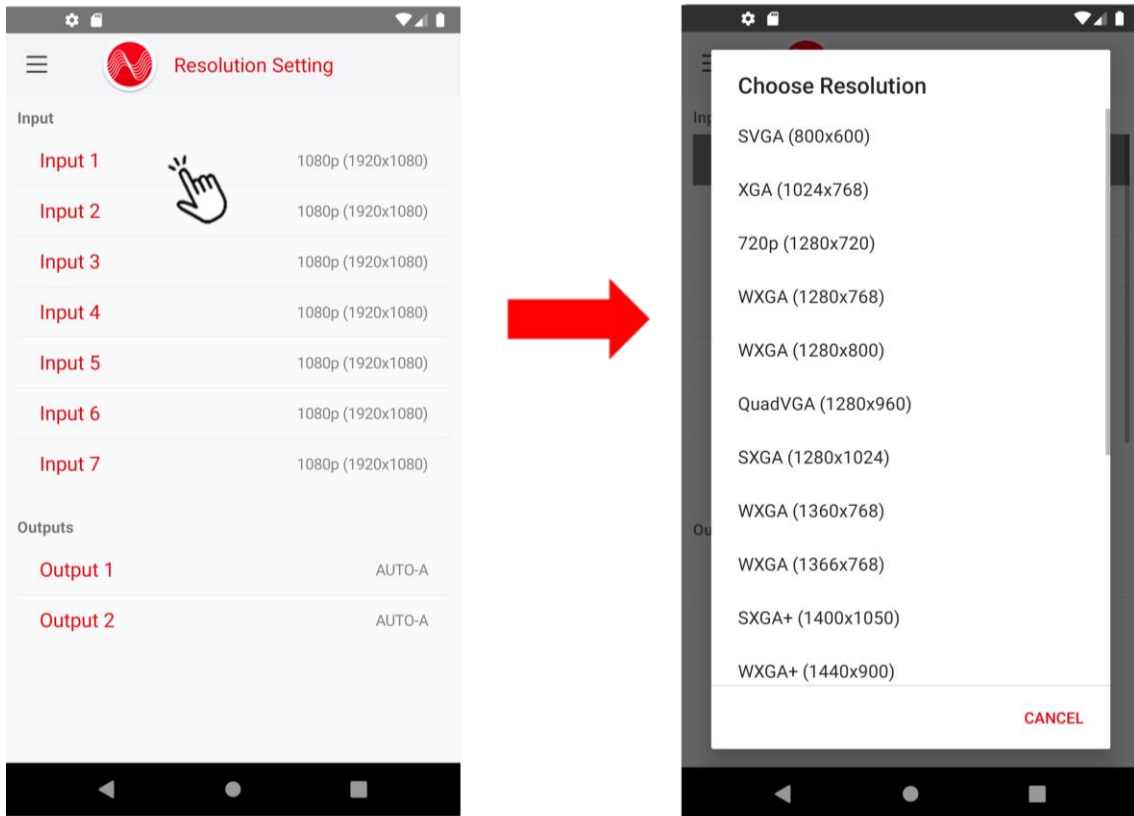
## 4.9 [HDCP Settings]



## 4.10 [Resolution Setting]

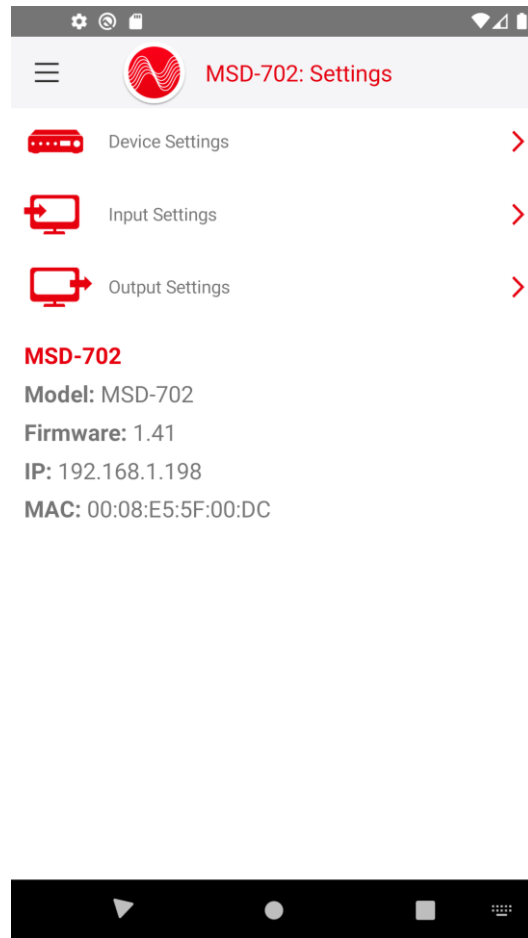
To set I/O resolution:

Tap the desired channel and select a resolution.



## 4.11 [Settings]

---



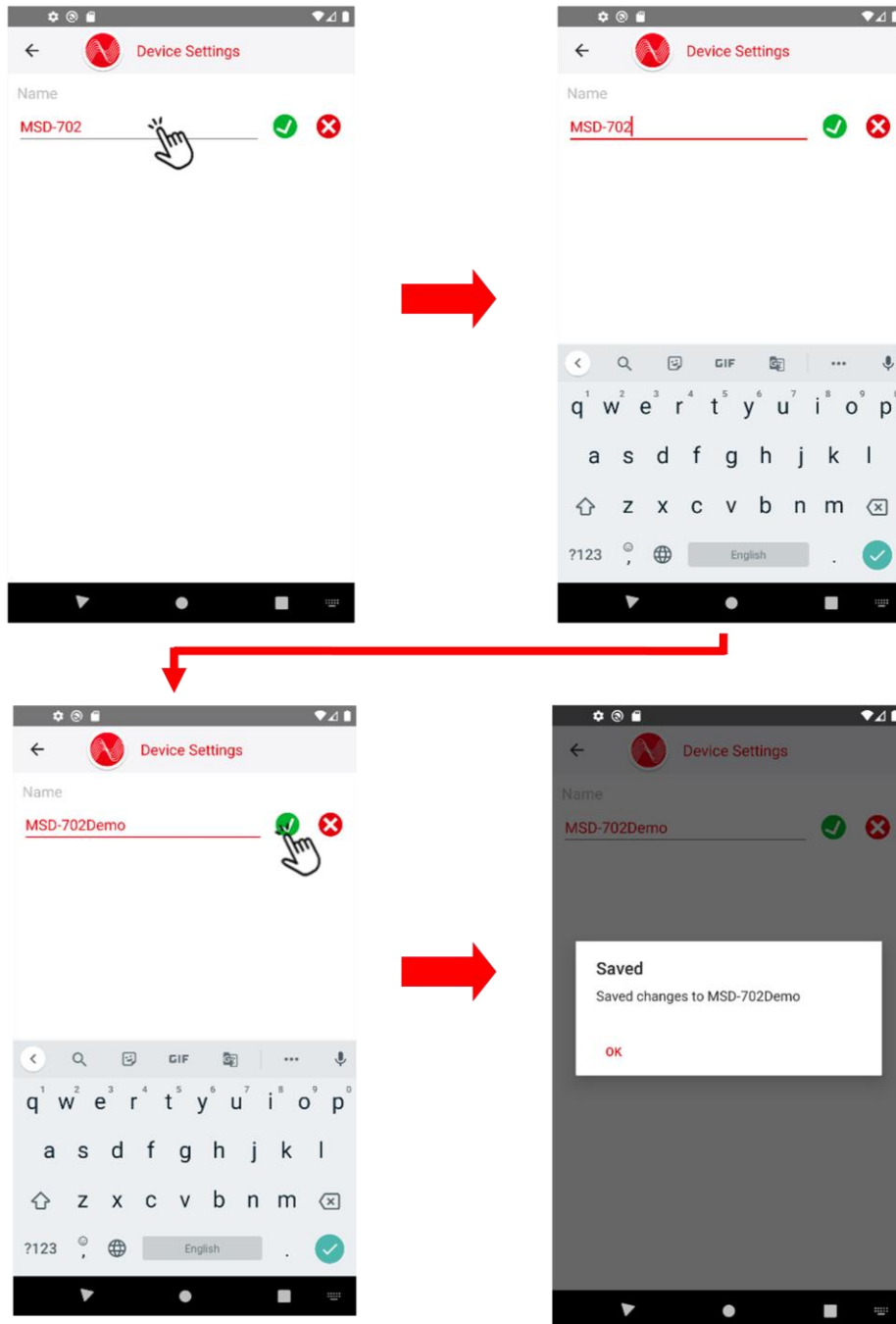
[Device Settings]	Changes device name	P.28
[Input Settings]	Changes each input icon and name	P.30
[Output Settings]	Changes each output icon and name	P.32

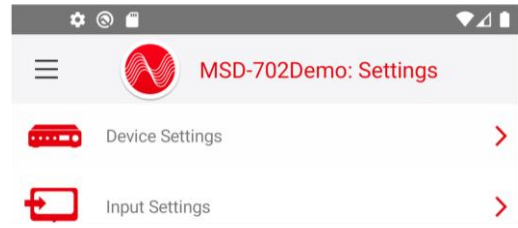
### 4.11.1 Changing device name

---

**To change device name:**

1. Tap the text area of the model name.
2. Enter the desired name (Up to 15 characters).
3. Tap the [x] (clear) or [✓] (save) button.

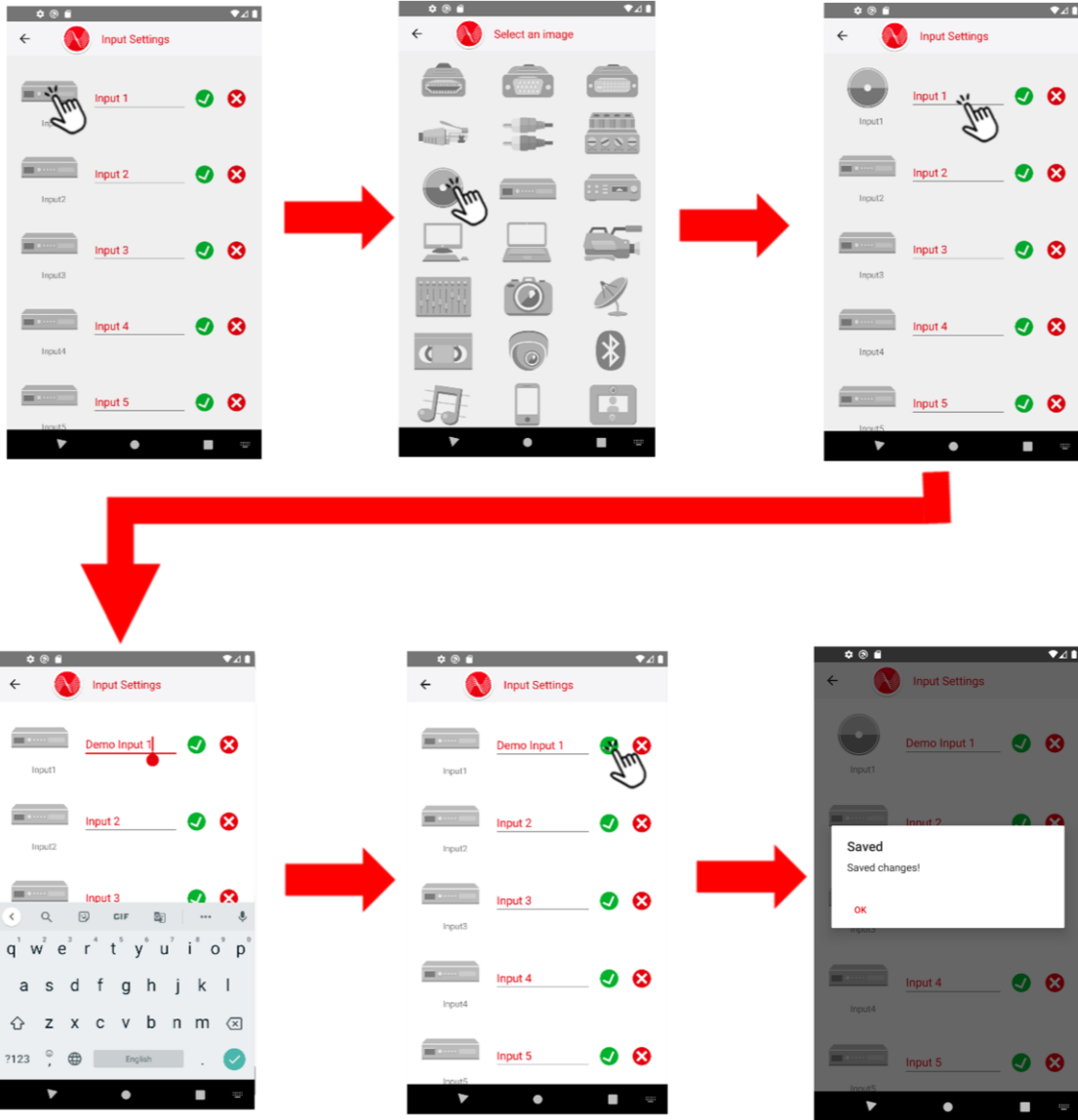


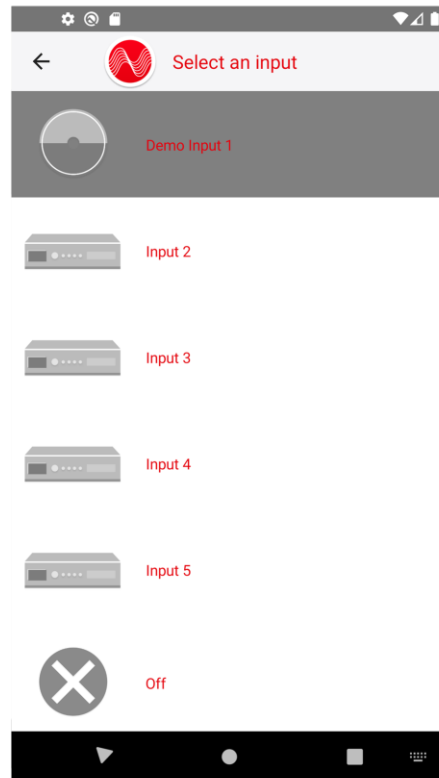
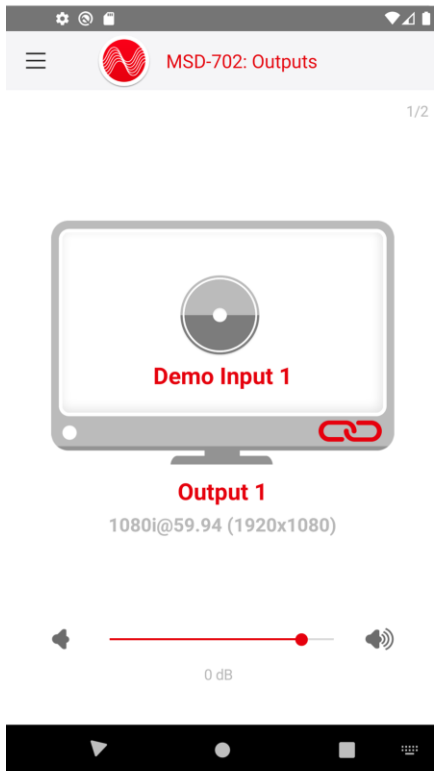


## 4.11.2 Changing input icon and name

To change input device icon and name:

1. Select the desired icon.
2. Tap the text area of the model name.  
Enter the desired name (Up to 15 characters).  
Tap the [x] (clear) or [✓] (save) button.

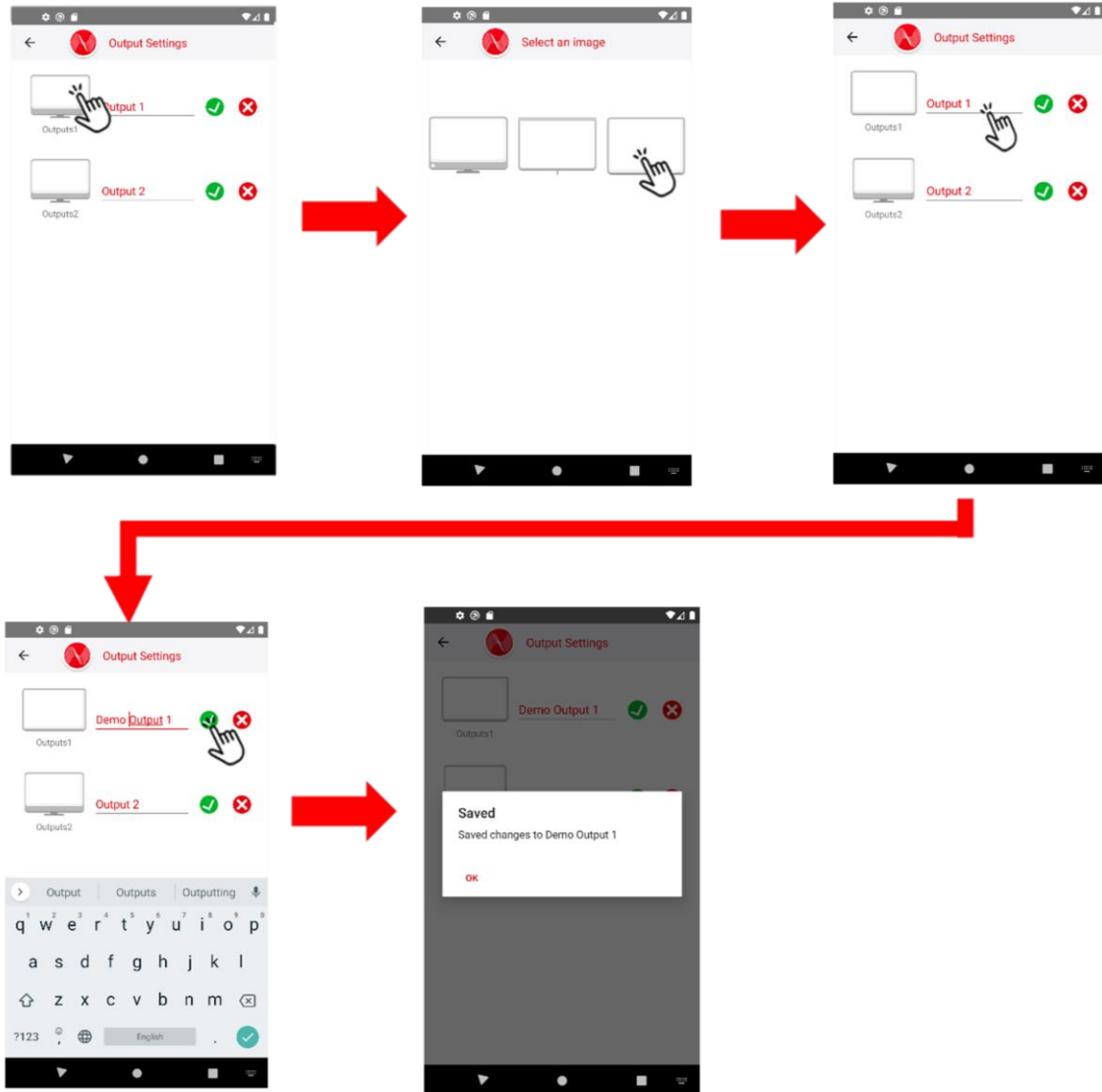




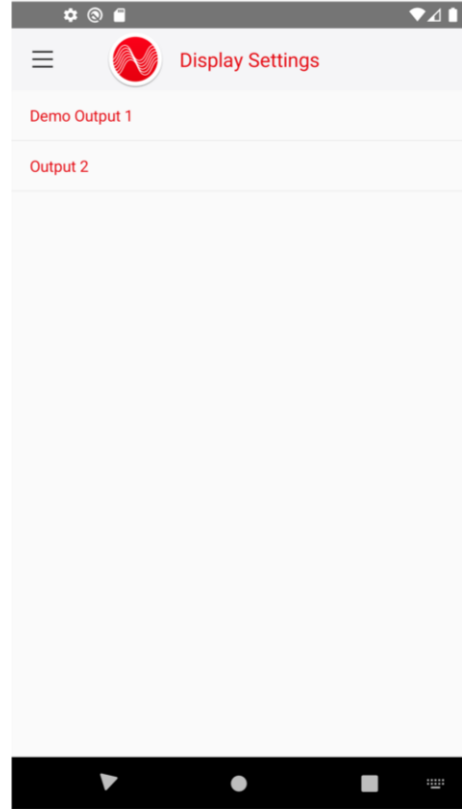
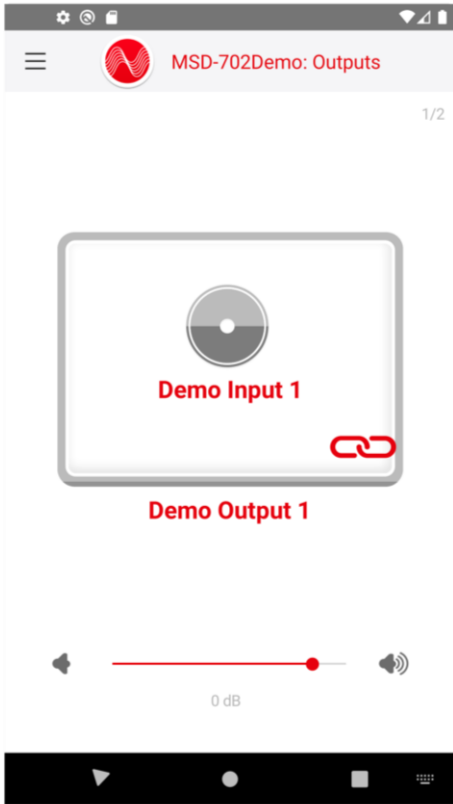
### 4.11.3 Changing output icon and name

To change output device icon and name:

1. Select the desired icon.
2. Tap the text area of the model name.  
Enter the desired name (Up to 15 characters).  
Tap the [x] (clear) or [✓] (save) button.



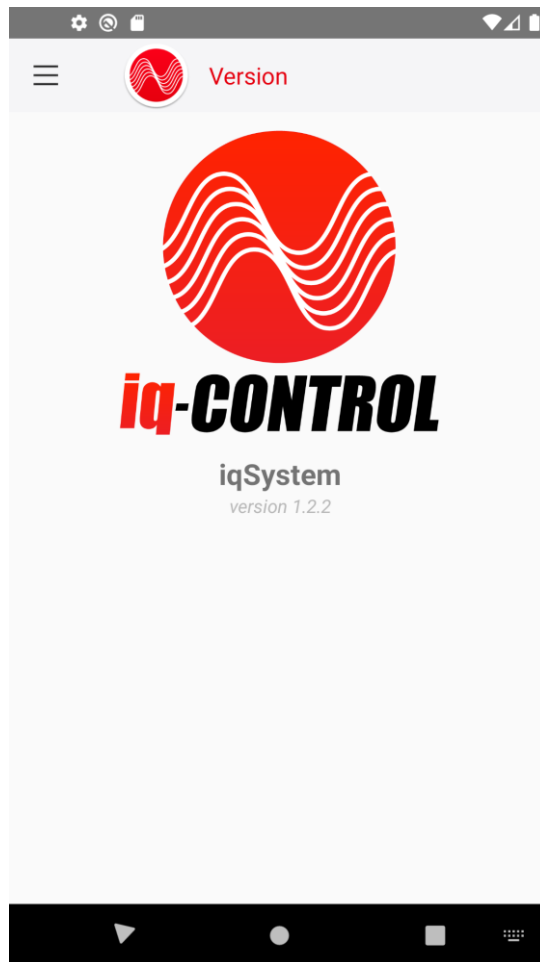




## 4.12 [Version]

---

You can check the IQ version you use.



## 5 Terminating IQ

---

Follow the procedure of your smartphone.

---

## User Guide of IQ

Ver.1.0.0

Issued on: 20 August 2021

---



### Headquarters

IDK Corporation  
7-9-1 Chuo, Yamato-shi, Kanagawa-pref.  
242-0021 JAPAN  
TEL: +81-46-200-0764 FAX: +81-46-200-0765

Email: [idk\\_eng@idk.co.jp](mailto:idk_eng@idk.co.jp)

URL: [www.idkav.com](http://www.idkav.com)

### USA

IDK America Inc.  
72 Grays Bridge Road Suite 1-C, Brookfield, CT 06804  
TEL: +1-203-204-2445

Email: [sales@idkav.com](mailto:sales@idkav.com)

URL: [www.idkav.com](http://www.idkav.com)

### Europe

IDK Europe GmbH  
Lise-Meitner-Str. 6, D-40878 Ratingen  
TEL: +49-2102-578-301-0

Email: [info@idkav.eu](mailto:info@idkav.eu)

URL: [www.idkav.com](http://www.idkav.com)



### Product information Support

Arvanics Corporation  
7-9-1 Chuo, Yamato-shi, Kanagawa-pref.  
242-0021 JAPAN  
TEL: +81-46-259-6920 FAX: +81-46-259-6930

Email: [info@arvanics.com](mailto:info@arvanics.com)

URL: [www.arvanics.com](http://www.arvanics.com)

Information in this document is subject to change without notice.

©2021 IDK Corporation, all rights reserved. All trademarks mentioned are the property of their respective owners.